

# **State-Led Resettlement Housing: Infrastructure accessibility lens analysis**

By: DUKUZEMARIYA Tharcille

# OUTLINE PRESENTATION

- General background
- Problem statement
- Objectives
- Methodology
- Results
- Conclusion
- recommendations

# BACKGROUND OF THE RESEARCH

- Limited access to adequate housing for urban poor and significant number of informal settlements in African cities have led governments to adopt various housing programs including resettlement housing.
- Sustainable Development Goals (SDGs) especially goal 11 target 11.1: Human settlements planning, management, and designs that offer sustainable, safe, affordable housing, slum upgrade, and basic services to all.
- Agenda 2063 “The Africa we want” aspirations 1 and 6 underline the need for sustainable development that provides modern-livable habitats, and basic quality services to all Africans

# BACKGROUND OF THE RESEARCH (CONT'D)

- Since 1997 Rwanda has implemented grouped rural settlement policy called "imidugudu" to both rehouse return refugees from 1994 Genocide against Tutsi and ensure effective agricultural land use management (Malonza & Brunelli, 2023).
- In 2007: IDP idea from the government retreat
- In 2009: started Improved imidugudu
- In 2010, integrated development programme (IDP) was adopted as strategy to improve the access to decent housing targeted by vision 2020 and EDPRS' targets of enhanced land use planning, social cohesion and poverty reduction (GoR, 2013).
- During the inauguration of the first IDP model village of Rweru (bugesera) in 2016, The president of the republic recommended similar model villages to be build country-wide
- Currently there are 124 planned IDPS through out all 30 districts, among



# THE RESEARCH ISSUE & OBJECTIVES



Slums of Kigali

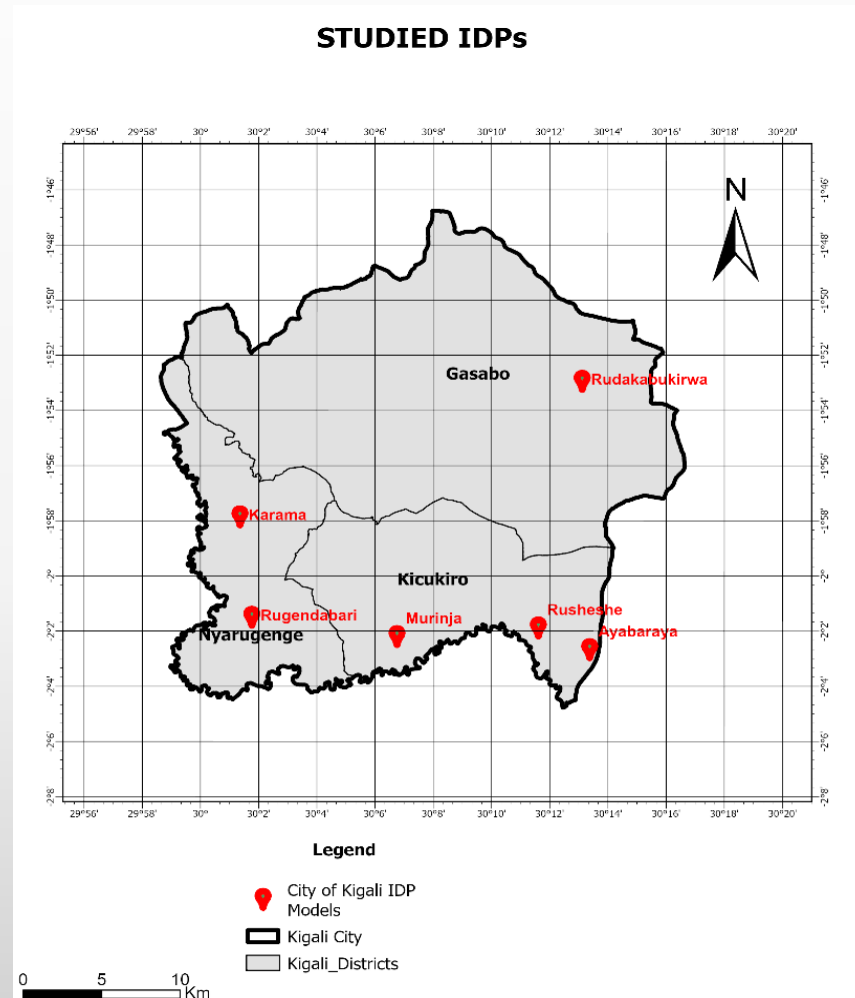


Karama IDP modal village

- In March 2018, a field survey conducted by a multisectoral team made up of the CoK, the RDF (RF), RHA and RFA indicated that 13,670 households (HHs) were living in informal settlements in High Risk Zones (HRZs) of CoK on the hilltops of Jali, Rebero and Kigali Mountains. HHs from Mt Kigali taking a big proportion of 55.4% of all surveyed HHs
- Despite the visible effort of the government in improving well-being of the population with special focus on the poor, to which extent this is achieved remain under-researched.
- This study aims to assess basic infrastructure accessibility of IDP model villages in terms of basic education facilities, healthcare facilities, and bus stops facilities.

# STUDY AREA

- Kigali city comprises of 11 model villages that shelter vulnerable households and one in-kind compensation IDP of Busanza.
- Due to data availability only 6 are part of this study:
  - Gasabo district:
    - Rudakabukirwa IDP
  - Nyarugenge district:
    - Rugendabari IDP
    - Karama IDP
  - Kicukiro district:
    - Rusheshe IDP
    - Ayabaraya IDP
    - Murinja IDP



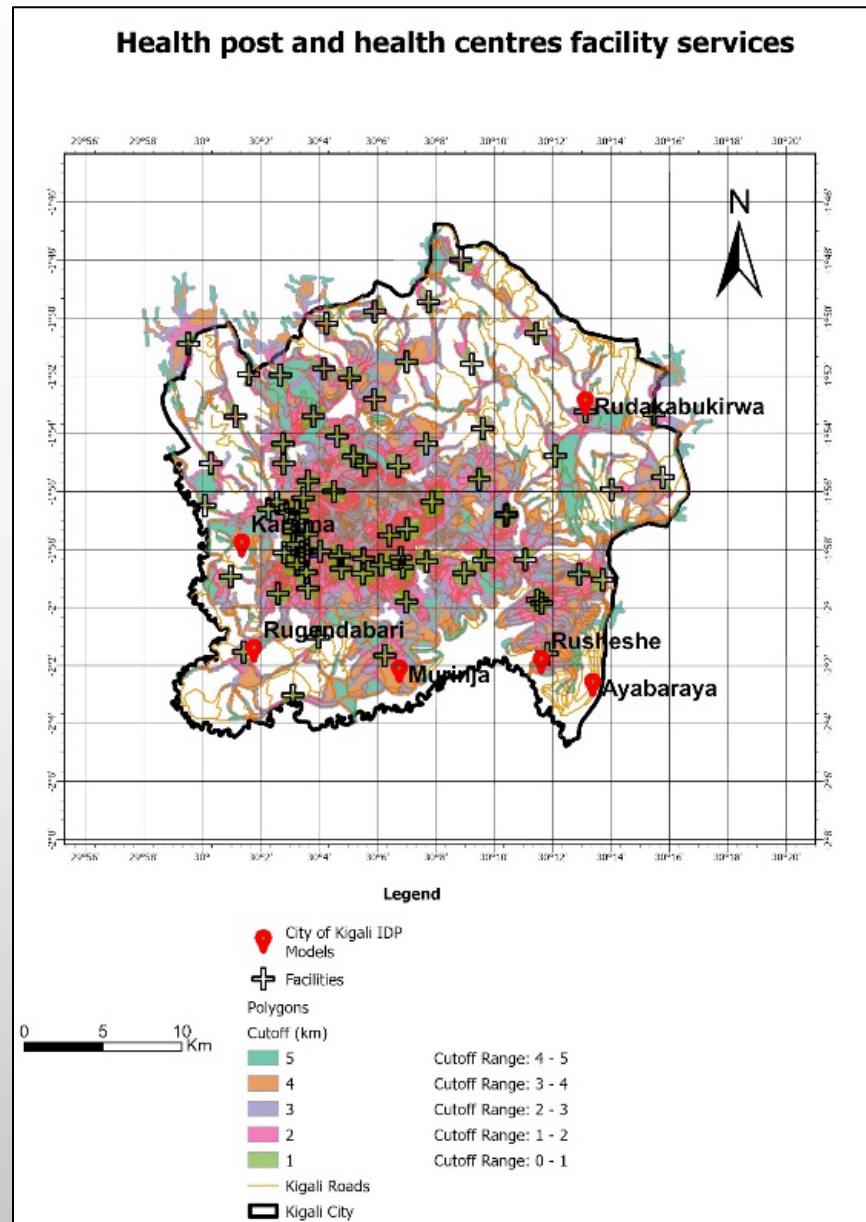
# RESEARCH METHODOLOGY

- Data:
  - Health facilities includes 40 health posts and 39 health centres;
  - Road networks,
  - 11 Bus stops;
  - Basic education facilities which are 139 pre-primary, 120 primary and 134 secondary schools;
- Data sources: Rwanda geoportal & NLA.
- Tools: ArcGIS Pro version 3.1.0 (online ArcGIS version of INES-RUHENGERI organization)
- Technique: Network analysis specifically service analysis tool
  - Travel distance(walking) for all studied facilities
  - Driving time only for bus stops: driving time was preferred because of the absence of public transports services at most IDPs in the city outskirts

# RESULTS

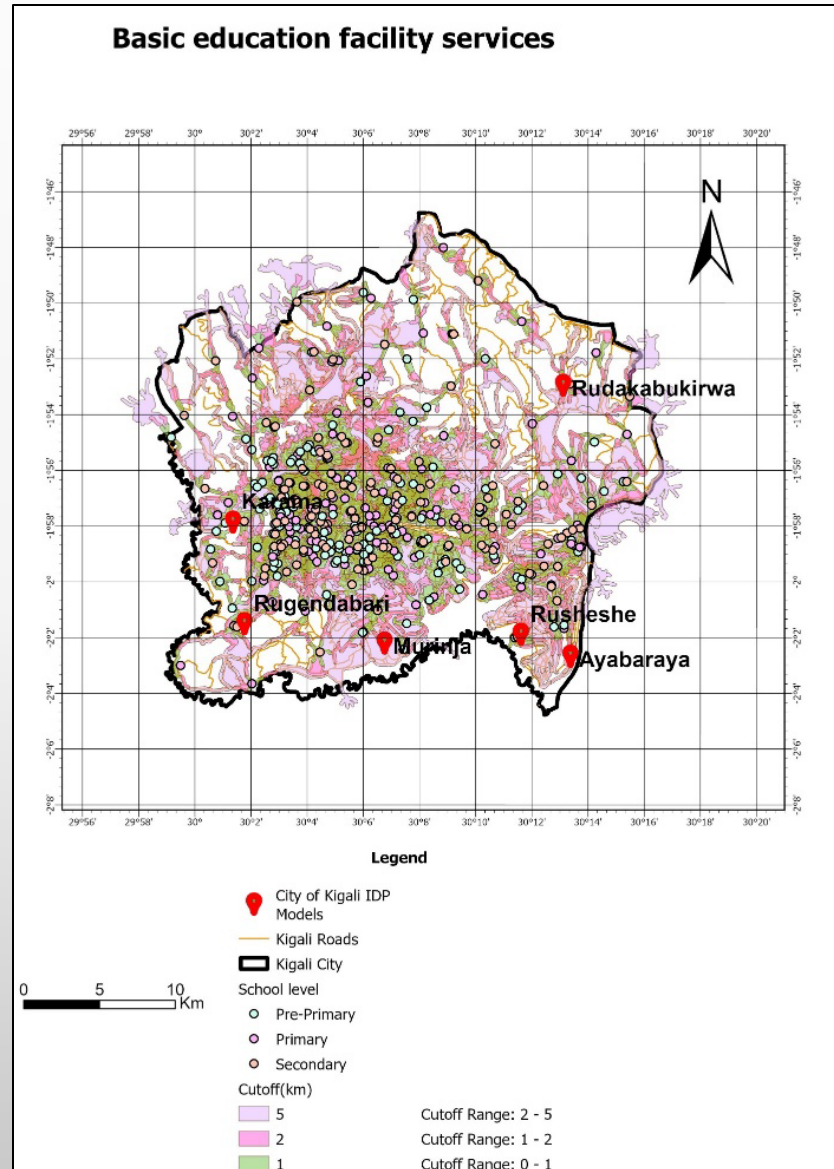
## ○ HEALTH FACILITY

- Around IDP model villages there is a mixed access to healthcare facilities.
- 3 IDPs are well services within 2 km distance compared to others.
  - Within 0-1km : Rudakabukirwa & Rugendabari.
  - Within 1-2km: Rusheshe
- Within 3-4 km: Mulinja
- Within 4-5 km: Karama
- Beyond 5km : Ayabaraya IDP, worstly services



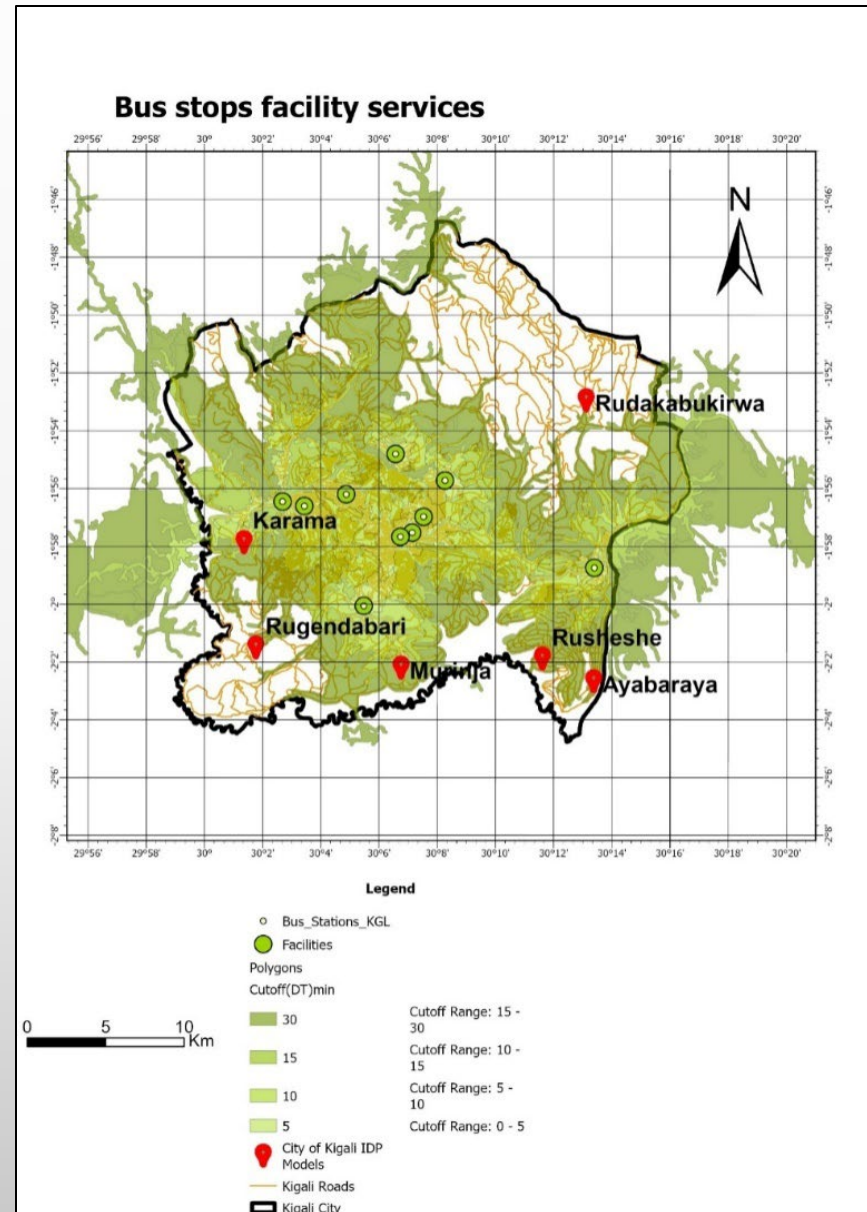
# RESULTS (CONT'D)

- BASIC EDUCATION FACILITIES
- Rusheshe, Rudakabukirwa, Rugendabari, and Karama are within 0-1km
- Ayabaraya and Murinja IDP villages are within 2-5 km walking distance from schools.
- According to Rwanda Education Board (REB), the recommended walking distance to pre-primary is 2km equivalent to 24 walking minutes
- Maximum distance suggested by literature is 1.6 km for Primary students and 3 km for secondary students (Sabeau, 2007).



# RESULTS (CONT'D)

- BUS STOPS FACILITIES
- Driving time
- Within 10-15 min: Karama IDP
- Within 15-30 min: Ayabaraya, Rusheshe, Murinja
- Beyond 30 min: Rudakabukirwa, Rugendabari.
- The absence of bus stops in IDP neighbourhoods means the absence of public transport services and being serviced with unpaved roads.
- As the program targets the most vulnerable households among others, the absence of public transport undermines their well-being by adding expensive motorcycle transport fee to their living expenses.



# CONCLUSION

- Mixed accessibility of infrastructures within IDPs of Kigali city: Adequate access of most IDP sites to primary and secondary schools and healthcare services
- Visible improved access to schools for primary and secondary schoolers at all IDPs
- Inadequate spatial distribution and access to bus stops coupled with the lack of nearby public transport facilities have reduced connectivity of the resettlement housing site and have excluded the residents from the urban environment opportunities.
- Further understanding of everyday life experiences and wellbeing of IDP model village residents will provide full feedback to decision makers and will provide as well a holistic picture of their life.

# RECOMMENDATIONS

- Conduct a research country wide in order to have the true image of the situation
- To improve the transportation service in order to allow residents of IDP model village have access to urban opportunities.
- Needs of improving access to basic healthcare facilities especially to Ayabaraya IDP
- For further project the selection of the location of IDP model villages has to take into consideration the available healthcare facilities, the education facilities and the transport means to allow residents to remain in their working environment.

MERCI POUR VOTRE  
ATTENTION